



GAT MONTHLY MEMBERSHIP PROGRESS REPORT

Results as of: 4/30/2023

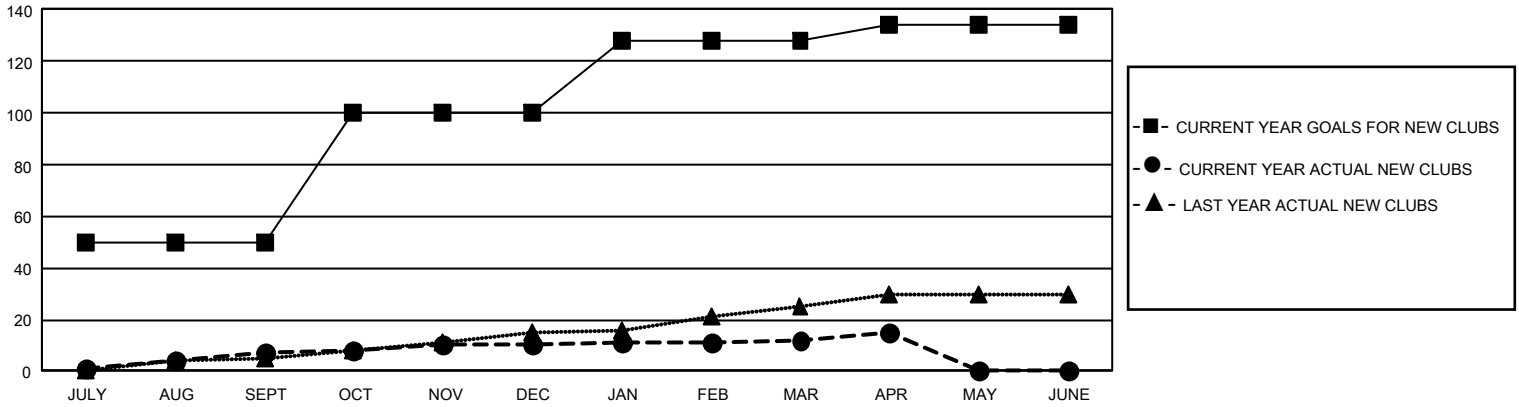
GMT Constitutional Area 5 - K, Group K

REPORT DOES NOT INCLUDE CLUBS IN UNDISTRICTED AREAS.

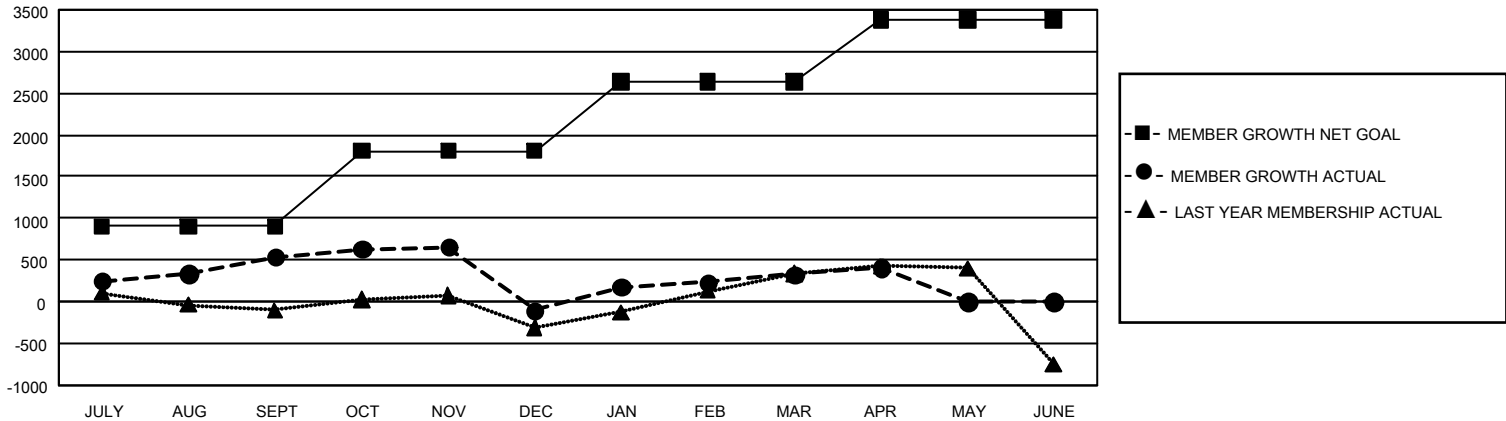
Clubs			
RESULTS FOR 2022-2023			
QUARTER	NEW CLUB GOAL	NEW CLUBS	DROPPED CLUBS
JULY/AUG/SEPT	150	7	6
OCT/NOV/DEC	150	3	13
JAN/FEB/MAR	84	2	5
APR/MAY/JUNE	18	3	0

Members			
RESULTS FOR 2022-2023			
QUARTER	MEMBER GROWTH NET GOAL	MEMBER GROWTH ACTUAL	DROPPED MEMBERS ACTUAL (including transfers)
JULY/AUG/SEPT	900	1,499	919
OCT/NOV/DEC	910	800	1,406
JAN/FEB/MAR	825	1,030	566
APR/MAY/JUNE	750	227	137

GOALS AND ACTUAL NEW CLUBS CUMULATIVE



GOALS AND ACTUAL MEMBERS CUMULATIVE



DROPPED CLUBS: 24 DROPPED MEMBERS DECEASED 69 CLUB CANCELLED 302 OTHER 2,657 TOTAL 3,028	589 CLUBS OF 833 ADDED 1 OR MORE NEW MEMBERS	GENDER DISTRIBUTION MALE 18,143 (69.49%) FEMALE 7,966 (30.51%) NON BINARY 0 (0.00%) PREFER NOT TO ANSWER 0 (0.00%)
	CLICK HERE FOR CUMULATIVE MEMBERSHIP DATA	TOTAL FAMILY UNIT MEMBERS 2,984 FAMILY MEMBERS PAYING HALF DUES 1,740